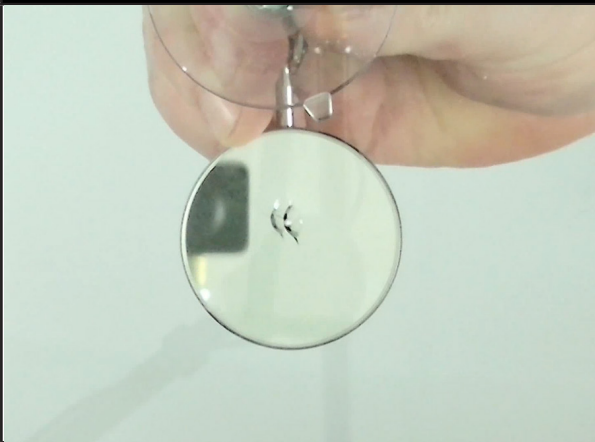


Step-by-step

Step-by-step guide to stone chip repairs

Step 1



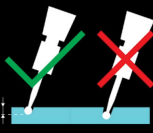
Mount the mirror on the inside of the glass, so the stone chip is visible in the reflection.

Step 2



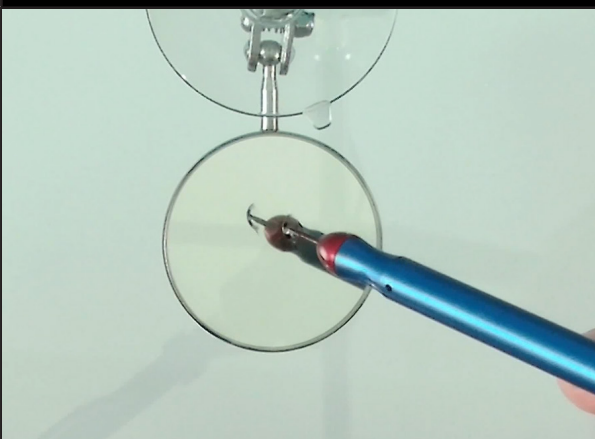
Use the drill and drill gently into the center of the stone chip to remove dirt. (45° angle)

This is done to remove any dirt in the stone chip while creating better adhesion for the pit filler. It also makes it easier to open up the stone chip.



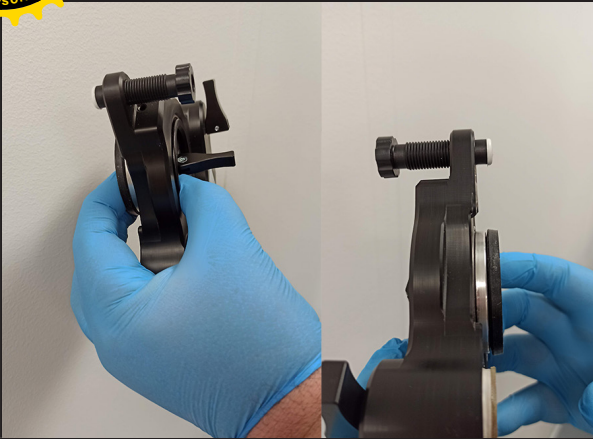
Drill down until the ball on the drill bit is just below the surface (approx. 1,5 mm).

Step 3



Use the slide hammer to open up the stone chip, allowing the liquid resin to access the full stone chip.

By opening up the stone chip it also becomes easier to remove any remaining water or moisture.



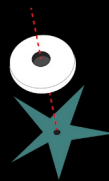
Before fitting the repair bridge it is important to ensure that it is in the correct position. This is done by grabbing the rotating part of the bridge (suction cup) and rotating until you hear a click.

Aside from that, it is also important that the piston is pulled all the way back, so that the rubber lip is flush with the the suction cup.

Step 5



Fit the 3-in-1 repair bridge so the center of the vacuum piston is centered on top of the stone chip.



Step 6

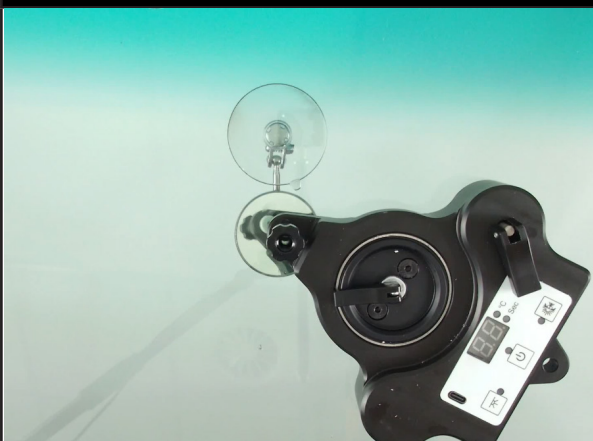


Turn the 3-in-1 repair bridge towards the heating/cooling section. Turn on the system and activate the heating button to the right. Wait until the glass is heated to 60°C (heating is indicated by a red light) This will be followed by automatic cooling to 20-25°C. (cooling is indicated by a blue light)



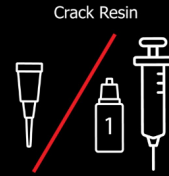
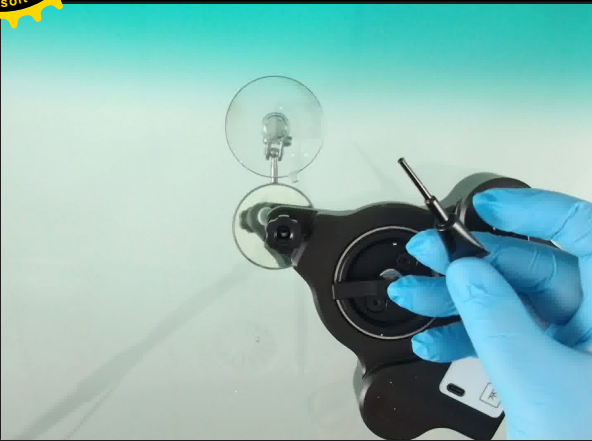
You can monitor the temperature on the display.

Step 7



Rotate the 3-in-1 repair bridge so the vacuum piston is centered over the stone chip.

Tighten the piston until the rubber lip touches firmly against the glass.

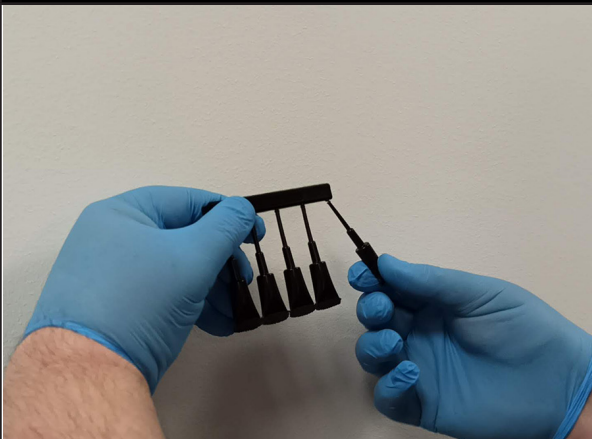


Take out the inner part of the vacuum piston completely, but make sure the main part of the piston remains unchanged and maintains firm contact with the glass.

Break off the pipette and fill the contents into the black part of the vacuum piston (press 5 times).

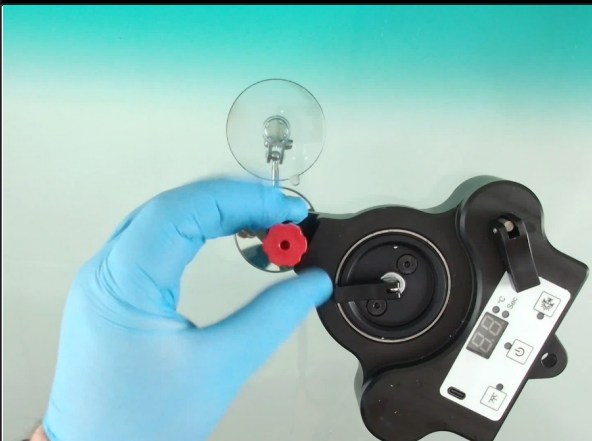
Or fill the syringe with 0.15ml resin and add the resin into the vacuum piston.

Step 9



When using pipettes, it is important to turn the rack upside down before breaking off the pipette.

Step 10

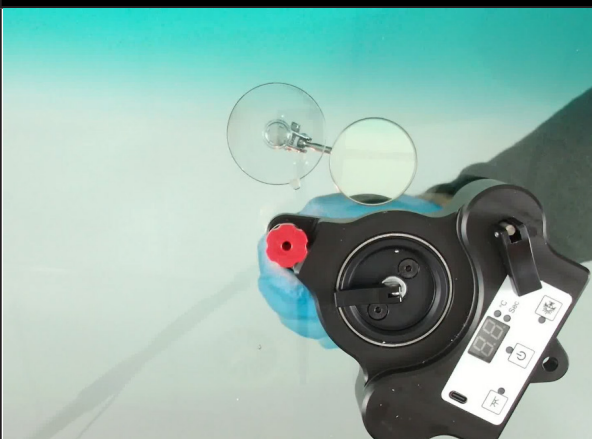


Insert the inner part to the vacuum piston and screw down until the white rubber ring opens 5-6 mm.

Use the mirror to have clear view of the process.

Leave the vacuum piston with pressure against the glass for 40-60 seconds.

Step 11



Remove the mirror and use the lighter to warm up the stone chip from the inside.

Make sure not to heat more than you are always able to touch the glass.

Reinstall the mirror afterward.

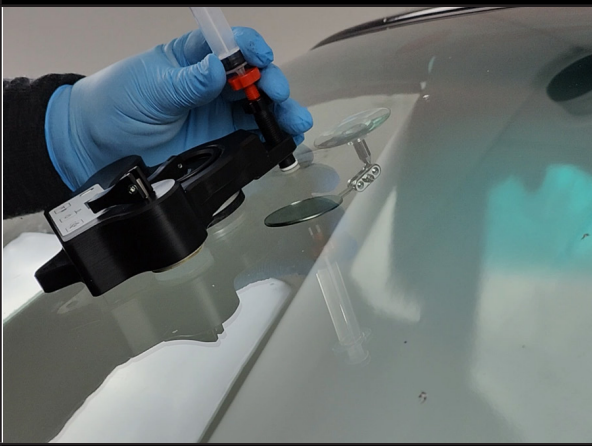
It is always possible to heat the repair while the pressure/vacuum process is in progress.



Loosen the inner part of the vacuum piston until the O-ring is visible.



Step 13



Fit the large syringe to the vacuum piston.

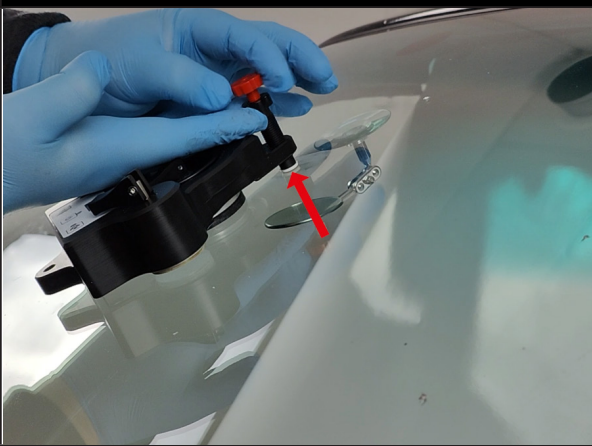
Hold the whole system tight and pull back the pump, to create vacuum for 5 seconds.



This will remove remaining air from the repair.

The process can be repeated.

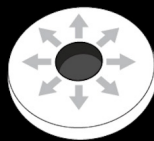
Step 14



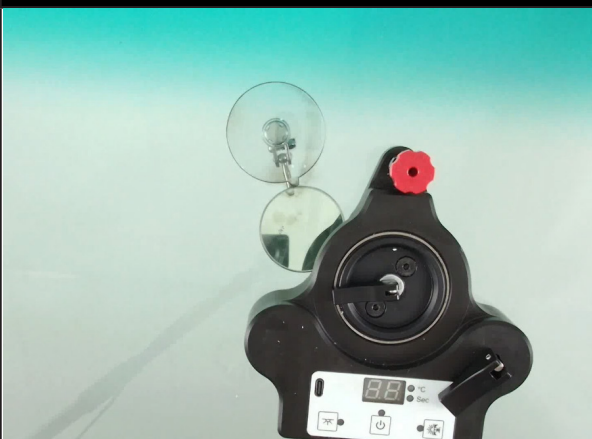
Remove the syringe.

Tighten the inner part of the vacuum piston, until the white rubber ring opens 5-6 mm.

Leave the system with pressure for 20-30 seconds, heat from the inside of the glass if necessary.

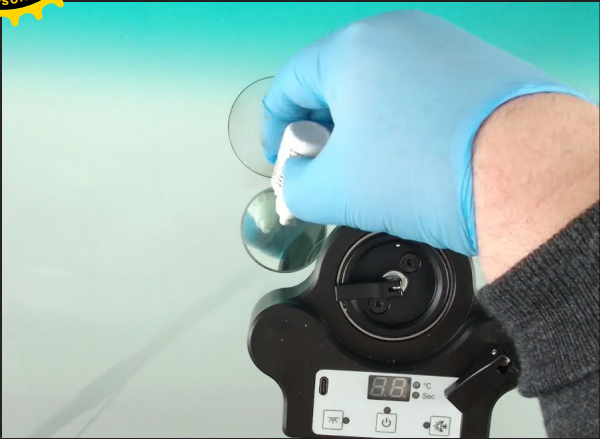


Step 15



Rotate the 3-in-1 repair bridge and evaluate the repair.

You can repeat the process if you are not satisfied with the result.

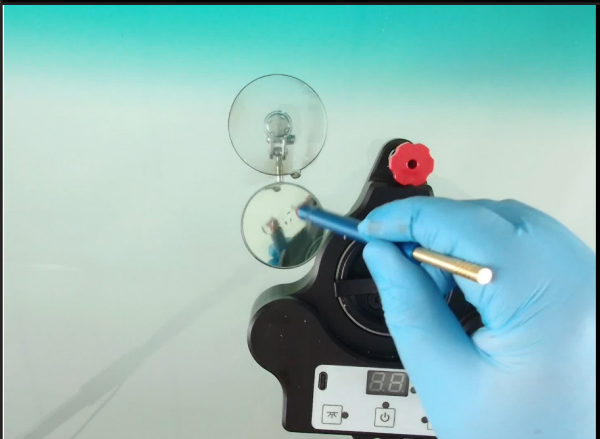


Pit Fill



Apply the pit filler (bottle no. 2) to the stone chip.

Step 17



Use the slide hammer to remove any air bubbles.*

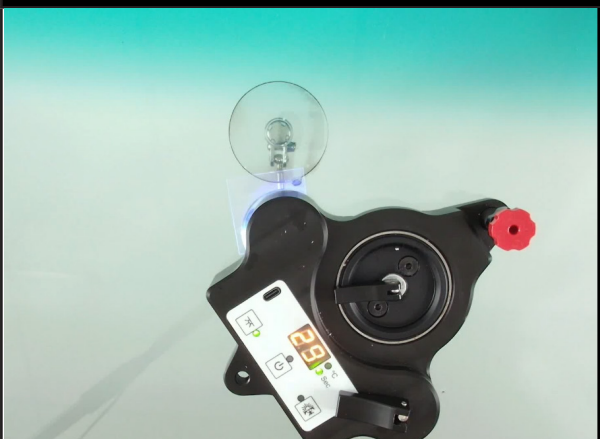
**Gently run it across the repair.*

Step 18



Apply the curing film on top of the pit filler liquid.

Step 19



Rotate the 3-in-1 repair bridge to the UV-lamp.

Turn on the system and activate the UV-lamp using the left button.

The lamp cures the stone chip within 30 seconds.



Remove the 3-in-1 repair bridge, mirror and curing film.

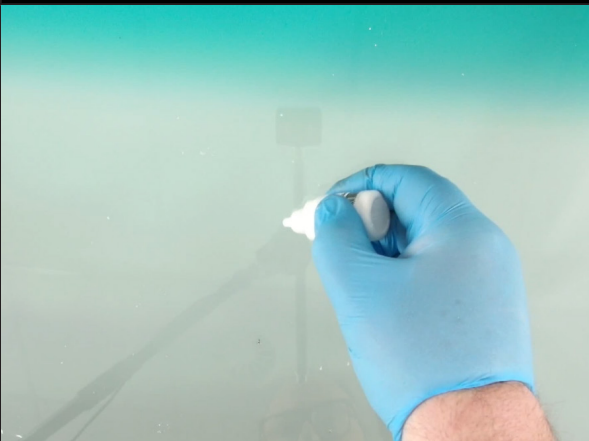
Wipe away any uncured resin.

Step 21



Use the razor blade with an angle of 90 degrees towards the glass, and gently scrape off the cured liquid.

Step 22



Apply the polish (bottle no. 3).



Step 23



Polish the area with a clean, soft cloth, or a clean piece of paper*, to achieve the final result.

**No residue of wet resin.*





Enjoy your finished result!