

OPERATING INSTRUCTIONS AND SAFETY NOTES

mobiMASTER and mobiFITT

230 V, 12 V DC, 24 V DC



FMT Swiss AG

This documentation is exclusively intended for the operating company and their staff.

Without our written consent, the content of this documentation (textes, figures, drawings, charts, diagrams etc.), must not be duplicated or distributed, neither in full or in part, utilized for the purpose of competition or passed on/made available to third parties.

FMT Swiss AG

Fluid Management Technologies Swiss AG
Gewerbestraße 6
6330 Cham / Switzerland
Tel. +41 41 712 05 37
Fax +41 41 720 26 21
Email: info@fntag.com
Internet: www.fntag.com

Operating instructions translation

Date of issue: 06 / 2021

We reserve the right to make design and product modifications, which serve to improve the product.

Table of Contents

1.	Introduction	3
1.1.	Preface	3
1.2.	Obligations of the personnel	3
1.3.	Symbols in this manual	3
1.3.1.	Structure of the safety notes	3
1.3.2.	Hazard symbols	4
1.3.3.	General symbols	4
2.	Safety notes	4
2.1.	Authorized personnel	4
2.2.	Intended conditions of use	5
2.3.	Risks when handling diesel fuels and heating oils	5
2.4.	Notes on maintenance, cleaning and repair	5
3.	Area of application	6
4.	Transport and storage	6
5.	Equipment of transport vehicles	7
6.	Training of the driver	7
7.	Required transport documentation	7
8.	Technical data	8
8.1.	Equipment	10
9.	Operation	10
10.	Installed components	12
11.	Guarantee	12
12.	Maintenance	12
13.	Tests	13
14.	Repair/Service	13
15.	Disposal	13
16.	Control and operating reports	14
17.	Damage and repair report	15
18.	Exploded view mobiMASTER-54 l/min	16
19.	Exploded view mobiMASTER-35 l/min	18
20.	Exploded view mobiFITT-35 l/min	20
21.	EC Declaration of Conformity mobiMASTER	22
22.	EC Declaration of Conformity mobiFITT	23

1. Introduction

1.1. Preface

Please carefully read these operating instructions and observe in particular all safety notes!

Our staff will be pleased to provide support if you have any questions about the product.

Yours sincerely, FMT Swiss AG

1.2. Obligations of the personnel

Before they start to work, all persons who are entrusted to work with the mobiMASTER and the mobiFITT, are obliged:

- to follow all applicable regulations on occupational safety and accident prevention.
- to read and to comply with all safety instructions and warning notes contained in these operating instructions.
- the staff must always comply with relevant ADR regulations.



NOTE

- In case of direct danger to the general public, the personal has to call the emergency services immediately and has to provide all necessary information.
- The obligations of the personal are specified in the ADR provisions.

Please observe the following instructions in the interest of all concerned:

- Refrain from any unsafe working methods!
- Adhere to all hazard and warning notes contained in this manual!
- In addition to this documentation, keep to all generally accepted safety rules, legal provisions as well as all other binding rules regarding occupational safety, accident prevention and environmental protection!
- Wear appropriate protective clothing in accordance with the work to be done!
- Perform only work for which you have been sufficiently trained and instructed!
- Only genuine spare parts as well as original tools and auxiliaries of the manufacturer are allowed to be used in order to ensure the functional safety and maintain the warranty coverage.

1.3. Symbols in this manual

1.3.1. Structure of the safety notes

The safety notes have the following structure:



SIGNAL WORD

Type and source of the hazard

- Consequences of non-compliance with the notes
- Measures to avoid that risk

Depending on the danger level, different signal words are used:

Signal word	Danger level	Consequences of non-compliance
DANGER	Imminent threat of danger	Death or serious bodily injury
WARNING	Possible threat of danger	Death or serious bodily injury
CAUTION	Possibly dangerous situation	Minor bodily injury
ATTENTION	Possibly dangerous situation	Damage to material property



NOTE

Indicates further information or tips which facilitate work

1.3.2. Hazard symbols

Symbol	Meaning
	General hazard symbol. The warning note marked in this way contains supplementary information on the type of hazard.
	This symbol warns of dangerous electrical voltages
	This symbol warns of a hazardous explosive atmosphere

1.3.3. General symbols

Symbol	Meaning
■	A small black square indicates the work you have to perform
–	The dash denotes lists
⇒	The arrow identifies cross-references. If cross-references to other chapters are required within the text, the expression is shortened for reasons of clarity. Example: ⇒ Chapter 2 Safety notes This means: please refer to chapter 2 for the safety notes

2. Safety notes

Various dangers may occur if the mobiMASTER and the mobiFITT are improperly handled during installation, commissioning and daily operation.



WARNING

Risk of injury and damage to material property because of improper handling

- Hold the instructions at the disposal of the operating staff at the usage site of the unit.
- Country-specific safety measures and accident prevention regulations must be observed.

2.1. Authorized personnel

Only qualified and authorized persons are allowed to operate and to work on the mobiMASTER and mobiFITT.

Persons are qualified if they are, due to their training, experience, instruction and knowledge of the relevant standards, able to assess assigned tasks and to identify potentially hazardous situations.

All persons charged with installation, operation, maintenance and repair work, must have read and understood this operation manual.

2.2. Intended conditions of use

The mobiMASTER and the mobiFITT are mobile tanks and have been exclusively designed for the delivery of and the refuelling with heating oil or diesel fuel.

The mobiMASTER with an internal volume of 450 l is available with a diesel pump with a 230V, 12 V DC or a 24 V DC motor.

The mobiFITT is available in three sizes, with an internal volume of 125 l, 200 l or 300 l and with a diesel pump with a 12 V DC or 24 V DC motor.



DANGER

Risk of injury and material damage

- No other fluid types than diesel and heating oil are allowed to be stored in this product.

Any application or modification beyond the intended use can lead to hazardous situations and shall be regarded as non-intended use.

The user is liable for any damage resulting from non-intended use.

2.3. Risks when handling diesel fuels and heating oils

Diesel fuels and heating oils are flammable liquids, which must be taken into consideration for their storage. If improperly handled, they can cause risks to human health or to the environment.

Escaping liquids can cause environmental harm. Do not allow to enter sewage or ground water. Local and country rules and regulations relating to domestic water supplies and fuel storage must be obeyed.



DANGER

Use of diesel fuels

- May be fatal if swallowed and enters airways.
- Do not smoke, do not use open fire and do not weld when handling fuel.

Use of heating oil

- Heating oil may cause lung damage if swallowed.



NOTE

- Observe the safety sheet for diesel fuels and heating oils!

2.4. Notes on maintenance, cleaning and repair



WARNING

Risk of injury and damage to material property because of improper maintenance and repair!

- Should unusual noises occur, immediately stop the diesel pump (⇨ fig. 18.-1; pos. 2). Immediately identify and eliminate the cause in order to avoid consequential damages.

3. Area of application

The mobiMASTER and the mobiFITT are mobile tanks and are suited for the transport of and for refueling with heating oil and diesel fuels.

The mobiMASTER and the mobiFITT can also be used as a stationary tank for storing and dispensing diesel.

In this case, it is the owner's responsibility that national directives relating to installation and use of this product are complied with.

The local fire and environmental protection measures must be observed.



DANGER

Risk of injury and material damage from explosive vapors!

- **Never use the pump to deliver explosive or oily fluids such as petrol or other fluids with similar flashpoints!**
- **Use in explosive environments is forbidden!**

The use in the food industry is forbidden.



ATTENTION

Escape of the fluid to be pumped

- After initial start-up, check the pump and the connections for tightness.

4. Transport and storage

The fuel tank is to be carried on suitable vehicles which are appropriately marked as per ADR regulations.

The loading area must be smooth and without sharp edges.



ATTENTION

- The device may be transported only with the power supply shut off and with closed valves and necks, rolled up hoses and lines and locked cover.
- The filled tank is only allowed to be loaded and unloaded by means of a stacker or a crane, whereby the load carriers must be correctly fixed.

- In transport vehicles carrying dangerous goods, no passengers other than the vehicle's crew may be carried.
- The vehicle's crew must be familiar with the fire extinguishing procedures.
- During transport, the tank must be fixed and secured.
- During storage and transportation, the tank must not be damaged.
- It is forbidden to push or to roll the tank.
- It is forbidden to get onto the vehicle with illumination equipment which has an open flame. In addition, the illumination equipment used may have no metal surfaces which could cause sparks. When loading the tank with fuel, smoking is forbidden in vehicles and in their vicinity.
- During loading and unloading, the engine must be turned off, unless a running engine is required for the operation of the pumps or of other loading and unloading devices or unless a running motor is allowed by the national rules of the country in which the vehicle is located.
- Before leaving the transport vehicle, the driver must secure it by applying the parking brake.
- A transport vehicle carrying dangerous goods may have no more than one trailer.

- During transport on a vehicle and during storage, the mobimaster and mobifitt tanks should not be exposed to direct sunlight for a longer period. An excessive heating can lead to a deformation of the high-quality plastic tank. Suitable storage temperatures are between -10°C and +40°C.

5. Equipment of transport vehicles

Every transport vehicle which is also required to fulfil requirements arising from other regulations must have the following equipment:

- Fastening belts for fixing and securing the mobile tank during transport.
- At least one portable 2 kg fire extinguisher with a seal, stamp of conformity as per the officially recognised standards, and date of expiration (month and year).
- At least one wheel chock per vehicle; its size must be appropriate to the vehicle weight and the wheel diameter.
- Two self-supporting warning indicators (e.g. reflective warning cones or triangles, or orange flashing warning lights with their own power supply).
- A suitable high visibility waistcoat or clothing (e.g. as per EN 471) for each employee on the transport vehicle.
- Hand lamp.



ATTENTION

Escape of fluid

- The mobiMASTER or mobiFITT tanks must not be damaged during transport or storage. The tank's equipment is to be maintained in a usable condition at all times!

6. Training of the driver

- The driver of the transport vehicle must be trained in the handling of dangerous goods as per the applicable directives.
- No additional training is necessary for drivers of vehicles transporting diesel, heating oil, or biodiesel.

7. Required transport documentation

In addition to documents required under other regulations, the following documents must be present in the transport vehicle:


- Delivery note
- Written operating instructions for the fuel tank




NOTE






- Written operating instructions must be kept in the driver's cab and must be easily accessible.
- The shipping company must ensure that the driver understands the operating instructions and can follow them correctly.
- Transport vehicles which deliver dangerous goods are to be correspondingly marked and fitted with warning stickers as per ADR regulations.

8. Technical data

Tank volume mobiMASTER (l)	450 l	450 l	450 l	450 l	450 l
Motor variant pump	230 V	12 V DC	12 V DC	24 V DC	24 V DC
	60 l/min	35 l/min	54 l/min	35 l/min	54 l/min
Material tank	LLDPE				
Material cover	LLDPE				
Temperature range (°C)	-10 / +40				
Color tank	black				
Colour cover	red				
Dimensions L x W x H (mm)	1200 x 800 x 912				
Attachment points	universal fixation loops for shackles on site				
Weight empty (kg)	56	56	56	56	56
UN approval	un 31H2/Z/** **				
Built-in digital gear meter 					
Display	4-digit, with 2 decimal digits		5-digit with floating point		
Pump					
Brand	FMT Swiss AG				
Pump design	vane pump, selfpriming				
Delivery rate under free discharge up to (l/min)	60	35	54	35	54
Discharge pressure up to (bar)	1,8	1,6	1,8	1,6	1,8
Pumping media	heating oil and diesel fuels				
Temperature range, pumping media (°C)	-10 / +40				
Connecting cable, length (m)	1,8	3	3	3	3
Motor data pump					
Voltage (V)	230 V	12 DC	12 DC	24 DC	24 DC
Power consumption (A)	3	18	30	13	21
Frequency (Hz)	50				
Thermal protection	self resetting				
Fuse (A)	–	25 plug-in fuse	40 plug-in fuse	25 plug-in fuse	25 plug-in fuse
Duty cycle (min)	continuous operation	60	180	60	180
Safety class	IP 66	IP 54	IP 66	IP 54	IP 66
Run time (min) when dispensing valve is closed max.	3	3	3	3	3

Tab. 8-1: Technical data mobiMASTER

 With or without built-in digital gear meter **depending** on the model

Tank volume mobiFITT (l)	125 l	200 l	300 l
Motor variant pump	12VDC / 24VDC 35 l/min	12VDC / 24VDC 35 l/min	12VDC / 24VDC 35 l/min
Material tank		LLDPE	
Material cover		LLDPE	
Temperature range (°C)		-10 / +40	
Color tank		black	
Colour cover		red	
Dimensions L x W x H (mm)	1000 x 654 x 387	1000 x 654 x 547	1000 x 654 x 727
Attachment points	universal fixation loops for shackles on site		
Weight empty (kg)	23	26	30,5
UN approval	un 31H2/Z/** **		
Built-in digital gear meter 			
Display	4-digit, with 2 decimal digits	5-digit with floating point	
Pump			
Brand	FMT Swiss AG		
Pump design	vane pump, selfpriming		
Delivery rate under free discharge up to (l/min)	35	35	35
Discharge pressure up to (bar)	1,6	1,6	1,6
Pumping media	heating oil and diesel fuels		
Temperature range, pumping media (°C)	-10 / +40		
Connecting cable, length (m)	3	3	3
Motor data pump			
Voltage (V)  	12 DC / 24 DC	12 DC / 24 DC	12 DC / 24 DC
Power consumption (A)  	18 / 13	18 / 13	18 / 13
Thermal protection	self resetting		
Fuse (A)	25 plug-in fuse	25 plug-in fuse	25 plug-in fuse
Duty cycle (min)	60	60	60
Safety class	IP 54	IP 54	IP 54
Run time (min) when dispensing valve is closed max.	3	3	3

Tab. 8.-2: Technical data mobiFITT

 With or without built-in digital gear meter **depending** on the model

  Value variable **depending** on the built-in pump

8.1. Equipment

The mobiMASTER and the mobiFITT are equipped with following components:

- Single-walled tank
- Universal fixation loops for shackles on site
- Lockable protection cover
- Filler neck unit with cover
- Level indicator
- Airing and venting valve
- Vane pump, with integral bypass
- On/off switcher
- Automatic nozzle with swivel joint
- In-line meter, digital (only variant with meter)
- Discharge hose 4 m, DN 19
- Foot valve with strainer
- Gas spring (only for mobiMASTER)

9. Operation

The mobile fuel tank was designed and constructed in such a way that it is as robust, safe, and low maintenance as possible.

All mobiMASTER and mobiFITT tanks are completely checked for proper function and tightness prior to shipment. After delivery, it should be confirmed that the tank's equipment is complete, and that there is no transport damage. After the pump set (if not already present) has been installed, and after filling with diesel fuel or heating oil, the tank is ready for operation.



ATTENTION

Damage to the product

- If the tank or a component of its equipment is damaged, the device must be put out of operation until the fault has been rectified.
- If a leakage of the tank has been detected, the fluid must be pumped into another container.
- The supplier of the device must be informed.

Because of the type of liquid stored, and the possible environmental damage resulting from it, the following instructions are to be observed:

- The tank is only allowed to be filled through the filler neck(⇨ fig. 18.-1; pos. 13). It is forbidden to overfill the tank!
- To prevent contamination and damage to the pump system, no contaminated fuel may be stored in the tank!
- The pump's user notes are to be read before commissioning and use, and they are to be complied with. (⇨ chapter 10; installed components)
- Filling and discharging may take place only under the supervision of an authorised employee.

- No damage to the fuel tank may occur during transport or storage. The tank's equipment is to be maintained in a usable condition at all times.
- The filter on the suction hose (⇨ fig. 18.-1; pos. 26) should also be cleaned if necessary when the supply rate is too low.
- The system is to be protected from interference by unauthorised persons.
- Park the vehicle as close as possible to the tank in order to avoid unnecessary stress to the hose.
- Take the nozzle (⇨ fig. 18.-1; pos. 5) out of the holder and insert it into the vehicle's filler neck. Press the trigger only when the pump (⇨ fig. 18.-1; pos. 2) is running.
- Operate the button located on the right side of the diesel pump to switch on the pump's power supply. (⇨ fig. 18.-1; pos. 2)
- Press the trigger for filling.
- The nozzle automatically stops when the vehicle's tank is completely filled.
- Operate the button to switch off the pump's power supply.
- Let the nozzle drip off into the vehicle's tank before you fix the nozzle in the holder again.
- Never leave the nozzle switched on when it is not used.
- Close the cover of the mobiMASTER or mobiFITT tank, in order to prevent the penetration of rain water.
- Any modifications of the device's design, equipment and intended use is forbidden without prior consultation with the manufacturer.



ATTENTION

Damage to the product

- This product is only allowed to be operated with sufficient liquid in the tank. Otherwise, irreparable damage of the refuelling system and its premature failure may occur!

10. Installed components

The operating instruction manual for the integrated diesel pump is added separately.
For variants with a meter, you will additionally receive the manual for the meter.

11. Guarantee

The manufacturer provides a guarantee of 5 years on the tank and of 2 years on the installed components from the date of purchase.

If a problem should occur despite all quality measures taken, please get in touch with our service contact partners:

FMT Swiss AG

Tel +49 9462 17-246

Fax +49 9462 1063

service@fmtag.ch

If it should be the case that the defect arose during the guarantee period because of incorrect handling or installation of the product, or that the defect arose outside the guarantee period, then the service costs will be charged to the owner.

Standard maintenance of systems, e.g. filter cleaning, battery replacement, calibration of the flow meter, is excluded from the guarantee.

The guarantee is annulled through:

- Damage resulting from incorrect installation and handling of the system
- Maintenance which was neglected, mechanical damage, or vandalism
- Defects which arise from repairs or constructional modifications carried out by an unauthorised service provider
- Change of the purpose of the product

FMT Swiss AG is not liable for damage arising from incorrect use nor contraventions to the operating instructions or regulations.

12. Maintenance

Regular maintenance helps to reduce the risk of product failure and premature component failure.

- In order to prevent the risk of leakages and spills, check to ensure that the suction and refuelling hoses are firmly fastened.
- Check the state of the power supply cables.



DANGER

Danger of contact with energized components

- When working on the electrical system of the pump, disconnect the pump in addition from the power supply and protect it against restarting!
- Before performing any maintenance work, disconnect the diesel pump from all electric and hydraulic supply sources.



CAUTION

- Regularly check the hoses and their seals. Replace any damaged parts immediately.



NOTE

- Visually inspect the tank on a regular basis.
- If a leakage of the tank has been detected, the fluid must be pumped into another container.
- The supplier of the device must be informed.

13. Tests

The owner is responsible for requesting the relevant authority to carry out periodical tests on the fuel tank.

- The tests are required to the scope and at the time periods below:

Test	Interval in years
Leak testing (test pressure 0.2 bar)	2 ½
External examination	2 ½
Internal examination	5
Type of construction and designation	5



NOTE

- The dates of the most recent tests of leakage and condition are to be applied to the fuel tank permanently.
- The month and the year, e.g. „04/19“ are to be stamped in the appropriate row on the maker's plate.
- In addition, a test report is to be written. The owner must retain the reports for the entire working life of the fuel tank.
- The reports are to be provided with the tank if it is sold.
- In the case of a negative test result, the tank is to be repaired by an authorised manufacturer.

The following minimum information must exist for each fuel tank:

- Manufacturer's designation
- Name of the current owner
- Serial number of the container
- Result of the first acceptance testing and of any leak testing (⇨ Chapter 16; **table 1**).
- Reports on tests carried out every 2 ½ and 5 years (⇨ Chapter 16; **table 2**).
- Damage and repair report (⇨ Chapter 17; **table 3**).

14. Repair/Service

mobiMASTER and mobiFITT were developed and produced according to the highest quality standards.

Should a problem develop, despite all quality controls, please contact our customer service:

FMT Swiss AG
 Tel +49 9462 17-246
 Fax +49 9462 1063
 service@fmtag.ch

15. Disposal

The operating company is responsible for the proper disposal of the mobiMASTER and mobiFITT.

Hereby, the industry-specific and local regulations must be observed when disposing the different materials.

Only qualified personnel is authorized to disassemble and dispose of the mobiMASTER and mobiFITT.

16. Control and operating reports

Dates	Approval holder	Manufacturer	Owner	Owner
Company / First name and surname	PRESSOL Tschechien s.r.o.	SWIMER		
Address post code, city/ country	326 00 Plzeň Czech Republic	87-100 Toruń Polska		
Street and house number	Nepomucká 1729/3	ul. Płaska 64		
Contact person				
Phone number				

Table 1: Control report for tank (manufacturer)

Code:  31H2/Z/

Serial number:

Name of tester	Date, signature	Leakage test/ examination	External test/ examination	Internal test/ examination	Equipment	Type, designation

Table 2: Acceptance test and periodical testing every 2,5 or 5 years (owner)

0 = complies; X = does not comply

17. Damage and repair report

Date, signature	Errors and actions taken

Table 3: Damage and repair report

18. Exploded view mobiMASTER-54 l/min

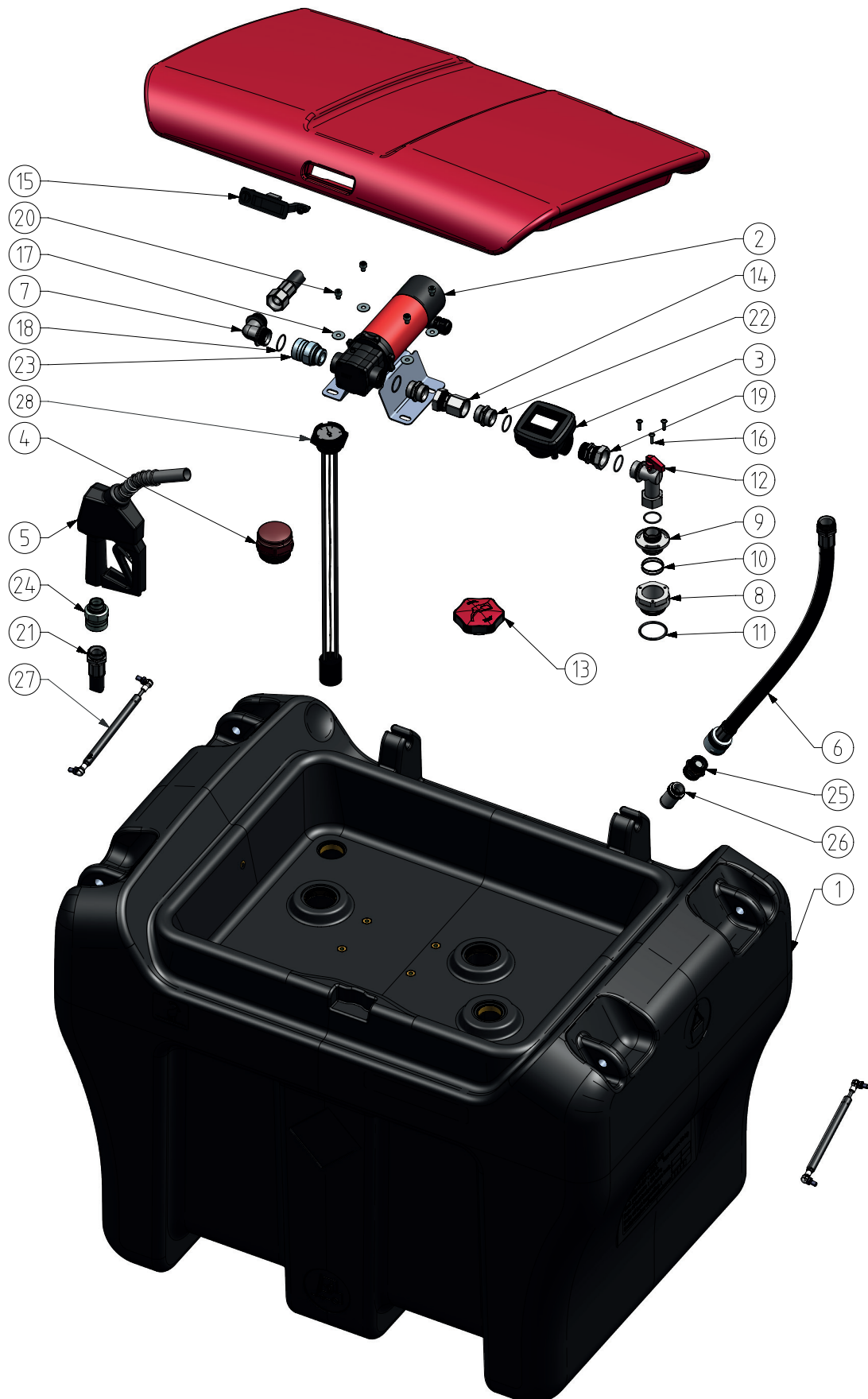


Fig. 18.-1: Exploded view mobiMASTER-54 l/min

Pos.	Quantity	Designation	Item no.
1	1	mobiMASTER-450 l tank	45 314 155
2	1	MOBIMAx diesel pump - for mobiMASTER	54 l/min-12 V DC 23 406 966
			54 l/min-24 V DC 23 407 966
3	1	In-line meter, digital NUMERlxx ³ -G 1" fem-G 1" fem	23 190 091
4	1	Airing and venting valve	45 140
5	1	Automatic nozzle valve diesel	G 3/4" fem-60 l/min 23 176
			G 1" fem-60 l/min 23 168
6	1	Suction hose for diesel	89 127
7	1	Bend 90°-Al-DN 19	85 370 777
8	1	Fitting	91 118
9	1	Adapter	91 119
10	2	O-ring-FKM 70-35x2,0	87 917 878
11	1	O-ring-NBR 70-47x4	83 131
12	1	Angled tap 90°	19 779
13	1	Tank cap	45 151
14	1	Positioning fitting-G 1" fem-G 1" fem	23 225 950
15	1	Lever lock	89 835
16	3	Screw M 5x20	89 825
17	4	Washer punched steel	00 432 007
18	5	O-ring-NBR 70-29x2,5	89 111
19	1	Positioning fitting-Al NW 25-G 1" male-G 1" fem-NW25	23 218
20	4	Cylinder head screw M 8x10	88 025
21	1	Discharge hose for diesel	23 155 957
22	2	Adapter G 1" male-G 1" male	85 358
23	1	Swivel joint DN 19	19 625
24	1	Swivel joint DN 19	19 621
25	1	Check valve	91 146
26	1	Suction strainer G 1" male	01 541
27	1	Gas spring kit 16-1-183/50N	45 153
28	1	Spiral-level indicator mechanical	04 402 100

Tab. 18.-1: Overview of components for fig. 18. -1

19. Exploded view mobiMASTER-35 l/min

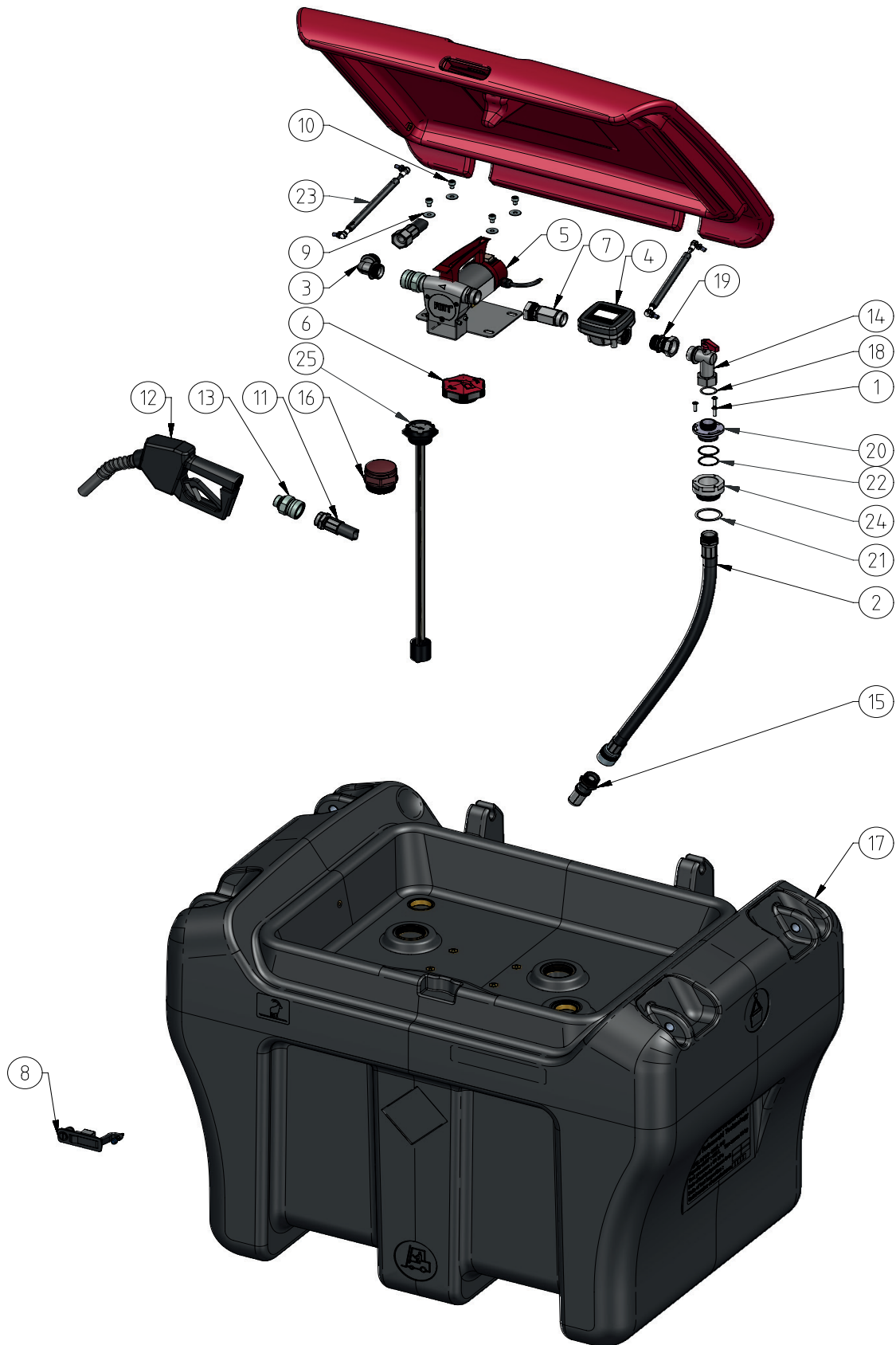


Fig. 19.-1: Exploded view mobiMASTER-54 l/min

Pos.	Quantity	Designation	Item no.
1	3	Screw M 5x20	89 825
2	1	Suction hose for diesel	91 217
3	1	Bend 90°-Al-DN 19	85 370 777
4	1	In-line meter, digital NUMERlxx ³ -G 1" fem-G 1" fem	23 190
5	1	MOBIFlxx 35 l/min 12 V-DC-ABK	23 012 966
		MOBIFlxx 35 l/min 24 V-DC-ABK	23 012 968
6	1	Tank cap	45 151
7	1	Positioning fitting	23 225 951
8	1	Lever lock	89 835
9	4	Washer punched steel	00 432
10	4	Cylinder head screw M 8x10	88 025
11	1	Discharge hose for diesel	23 155 957
12	1	Automatic nozzle valve diesel	23 176 777
13	1	Swivel joint DN 19	19 621
14	1	Angled tap 90°	19 779
15	1	Suction strainer G 1" male-G 3/4" female	91 146 001
16	1	Airing and venting valve	45 140
17	1	mobiMASTER-450 I	45 314 155
18	1	O-ring-NBR 70-29x2,5	89 111
19	1	Positioning fitting-Al NW 25-G 1" male-G 1" fem-NW25	23 218
20	1	Adapter	91 119
21	1	O-ring-NBR 70-47x4	83 131
22	2	O-ring-FKM 70 - 35x2,0	87 917 878
23	1	Gas spring kit 16-1-183/50N	45 153
24	1	Fitting	91 118
25	1	Spiral-level indicator mechanical	04 402 100

Tab. 19.-1: Overview of components for fig. 19. -1

20. Exploded view mobiFITT-35 l/min



Fig. 20.-1: Exploded view mobiFITT-35 l/min

Pos.	Quantity	Designation	Item no.
1	1	Cylinder head screw M 5x6	89 445
2	1	Flat seal 86x50x3	89 821
3	6	O-ring-NBR 70-5x15	01 371
4	3	Washer punched steel	00 432 007
5	3	Cylinder head screw M 8x10	88 025
6	6	Screw M 5x20	89 825
7	4	Tapping screw 3,9x9,5	87 929
8	1	O-ring for tank cap	81 317
9	1	Socket for tank cap	81 316
10	1	Tank cap	89 822
11	1	Positioning fitting G 1" female-G 1" female	23 225
12	1	Bend 90°-Al-DN 19	85 370 777
13	1	Spiral-level indicator mechanical	82 601 100
14	1	O-ring-NBR 70-29x2,5	89 111
15	1	Discharge hose for diesel	23 155 967
16	1	Automatic nozzle valve diesel	23 176 777
17	1	Swivel joint DN 19	19 621
18	1	Angled tap 90°	19 779
19	1	Adapter	89 811
20	1	Discharge hose for diesel	82 604
21	1	Suction strainer -G 1" female-G 1" female	23 180
22	1	Check valve	19 892
23	1	Washer	02 853
24	1	Cylinder head screw M 5x10	89 443
25	1	MOBIFlxx 35 l/min 12 V-DC-ABK	23 012 964
		MOBIFlxx 35 l/min 24 V-DC-ABK	23 012 965
26	1	Lever lock	89 835
27	1	Airing and venting valve	45 140
28	1	mobiFITT-200 I	45 481 155
29	1	In-line meter, digital-G 1" male-G 1" male	23 287 950
30	1	Positioning fitting G 1" female-G 1" female	23 225 950
31	1	Positioning fitting G 1" female-G 1" female -left	23 226

Tab. 20.-1: Overview of components for fig. 20.-1

21. EC Declaration of Conformity mobiMASTER



Manufacturer:

FMT Swiss AG

Fluid Management Technologies Swiss AG

Gewerbestraße 6

6330 Cham / Switzerland

Declares under his sole responsibility that the machine:

Model	450 l	450 l	450 l	450 l	450 l
mobiMASTER	230 V	12 V DC	12 V DC	24 V DC	24 V DC
	60 l/min	35 l/min	54 l/min	35 l/min	54 l/min
Function	Mobile tanks suited for storage, transport and refuelling with heating oil and diesel fuels				
Year of manufacture	see type plate				
Serial number					

Complies with all relevant provisions of the following directives:

EC Directives 2006/42/EC Machinery Directive
 2014/30/EC EMC Directive
 2011/65/EC EC-Directive (RoHS)

Applicable standards EN 809:2012-10
 EN ISO 12100:2011-03

Authorized representative for the compilation of the technical documentation:

Name: Manuel Bredenbruch
Address: Fluid Management Technologies Swiss AG
 Gewerbestraße 6
 6330 Cham / Switzerland
Phone: +49 9462 17-218

FMT Swiss AG
Cham, 08.07.2020

Dipl.-Ing. Rudolf Schlenker
(Managing Director)

22. EC Declaration of Conformity mobiFITT



Manufacturer:

FMT Swiss AG

Fluid Management Technologies Swiss AG

Gewerbestraße 6

6330 Cham / Switzerland

Declares under his sole responsibility that the machine:

Modell mobiFITT	125 l 12 V DC / 24 V DC	200 l 12 V DC / 24 V DC	300 l 12 V DC / 24 V DC
	35 l/min	35 l/min	35 l/min
Function	Mobile tanks suited for storage, transport and refuelling with heating oil and diesel fuels.		
Year of manufacture	see type plate		
Serial number			

Complies with all relevant provisions of the following directives:

EC Directives	2006/42/EC Machinery Directive 2014/30/EC EMC Directive 2011/65/EC EC-Directive (RoHS)
---------------	--

Applicable standards	EN 809:2012-10 EN ISO 12100:2011-03
----------------------	--

Authorized representative for the compilation of the technical documentation:

Name: Manuel Bredenbruch
 Address: Fluid Management Technologies Swiss AG
 Gewerbestraße 6
 6330 Cham / Switzerland
 Phone: +49 9462 17-218

FMT Swiss AG
 Cham, 08.07.2020

Dipl.-Ing. Rudolf Schlenker
 (Managing Director)

FMT Swiss AG

Fluid Management Technologies Swiss AG

Gewerbestraße 6

6330 Cham / Schweiz

Tel. +41 41 712 05 37

Fax +41 41 720 26 21

info@fmtag.com

www.fmtag.com