

## Solar window film M+

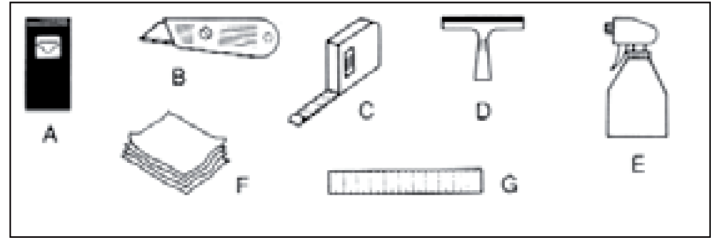
Three easy steps, resulting in a good and durable result.

With sun protection film, you can achieve a professional result when you install the film on a clean glass surface, use appropriate and clean tools, and take your time to carefully follow all the instructions provided below.

### READ THROUGH THESE INSTRUCTIONS CAREFULLY BEFORE STARTING THE INSTALLATION WORK.

#### THE FOLLOWING TOOLS ARE ALL YOU NEED

- A. Cleaning blade
- B. Utility or carpet knife or a similar very sharp cutting tool (we recommend a 9-mm knife with retractable blades, including several blades in reserve)
- C. Tape measure
- D. Squeegee, rubber
- E. Spray bottle containing wetting solution (Wetting solution: two teaspoons of plain dishwashing liquid mixed with half a liter of cold water.)
- F. Soft, lint-free drying cloths, microfiber cloth, etc.
- G. Ruler



#### CLEANING THE GLASS FROM THE INSIDE

- Clean the window glass thoroughly from the outside and inside.
- With a sharp blade, gently clean any paint, varnish or stubborn stains from the glass by scraping the surface.
- Clean and dry with a cloth. Spray the entire glass surface with the wetting solution. Dry the surface with a squeegee by using vertical strokes from top to bottom. Dry the corners and edges carefully with a cloth.

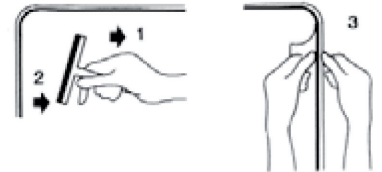


#### ATTACHING THE FILM TO THE INNER SURFACE OF THE GLASS

1. Cut the film all around at least 1.5 cm larger than the window glass. Moisten the outer surface of the glass, place the film on the outer surface of the glass, and cut the film precisely into the shape of the glass. The film is now ready to be attached to the inner surface of the glass.
2. Spray plenty of solution on the inside of the glass until the glass is completely wet.
3. Remove the protective backing of the film so that the adhesive surface is exposed. To make it easier to remove the protective backing film, attach masking tape strips on both the protective backing film and the window film, and then pull the films apart with the help of the strips of tape. Moisten the film's adhesive surface with plenty of wetting solution.
4. When the glass surface is wet, lift the film from its top corners and set it in place on the glass with the adhesive side against the glass.
5. Smooth the film carefully, while ensuring not to wrinkle it, by gently pulling from the edges and pressing with the palm of your hand. If the film does not slide easily on the surface of the glass, lift the film off the glass and add some wetting solution on the glass.

#### FINISHING PHASE

- Spray some solution on the film that is attached to the glass. Start drying the film by pulling the squeegee horizontally from side to side, starting at the top edge of the film. Make sure that all the air bubbles and excess wetting solution are removed from under the film.
- If necessary, finish off all the edges by pressing the ruler firmly against the window glass. With a sharp knife, cut the edges straight, leaving a gap of approximately 1.5 mm free between the film and the glass frame, so that the film does not hit the groove of the window frame and start fraying at the edges.
- Spray the film again with some more solution and dry with the squeegee once more to remove all air bubbles from under the film. Place a cloth on the squeegee and dry all the edges thoroughly by pressing the squeegee on the edges while pulling towards the glass frame at the same time.



#### SPECIAL INSTRUCTIONS FOR CURVED GLASS SURFACES

For most car window glasses, even slightly curved ones, the above instructions are quite sufficient. However, for cars with uniform curved glasses, the window film must be installed in strips. The intensity of the curvature of the glass determines how many strips are needed for successful installation. For slightly curved glasses, use two or three horizontal strips, and for more curved glasses, use six to eight strips.

- The installation always requires that the glass surfaces are absolutely clean.
- By utilizing the outer surface of the glass, cut a template in the shape of the glass. The strips must be approximately 1,5 mm larger so that you can overlap the seams during installation.
- Always start the installation at the bottom of the glass and proceed upwards. Install the seams of each strip approximately 1.5 mm overlapping the previous strip.
- To complete the installation, spray the film-covered glass and finish off by drying with the squeegee. Drying should be carried out parallel to the strips (horizontally).

#### IMPORTANT NOTES

Do not attach the films in direct sunlight. For the best end result, make sure that the glass surfaces are cool. If the edge seam of the film opens at any point after attachment, secure the seam, for example, by attaching it with clear nail polish.

#### Window glasses that can be opened

When installing films on side window glasses that can be opened, make sure that the window is in its topmost position (closed). If the window can be opened, use clear nail polish to paint a thin layer over the bottom edge of the film. This prevents the film from fraying when lifting and lowering the glass. Allow the film to dry for at least seven days before opening the window for the first time. This time will allow the glue to properly attach itself to the glass.

#### Cleaning and maintenance

During the drying phase (2–4 weeks), there may be some unclear spots and small bubble formations in the film. This is normal and they will disappear on their own. Do not clean the film for four weeks and, even after this, wash the film surface with plain water and mild detergent. Avoid using ammonia-based cleaning agents. Dry the film after washing. Do not use brushes, paper towels or abrasive powders, as they can scratch the surface of the film.

#### IMPORTANT

Avoid installation of the following:

- tinted film on the front side windows
- any film on the windscreen
- darker film on windows that are already tinted
- reflective film on curved surfaces.

**m+plus**

Maahantuaja:  
**motoral**  
www.motoral.fi